



Flat (EPC Rating: C)

FLAT, 6 STATION ROAD, EAGLESCLIFFE, TS16
0BU
Per Month
£775 Per

TLG | The Letting Group
Lettings | Management | Repossession



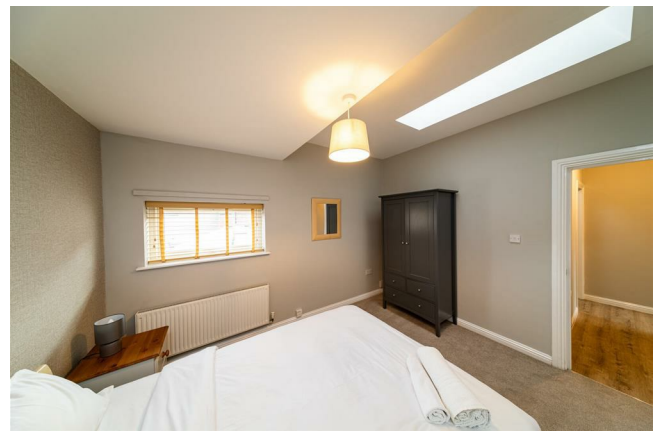
2 Bedroom Flat located in Eaglescliffe

Nestled in the charming area of Eaglescliffe, this delightful flat offers a perfect blend of comfort and convenience. With two well-proportioned bedrooms, this property is ideal for small families, couples, or individuals seeking a peaceful retreat.

The flat features a welcoming reception room, providing a warm space for relaxation or entertaining guests. The layout is thoughtfully designed to maximise space and light, creating an inviting atmosphere throughout. The bathroom is functional and well-appointed, catering to all your daily needs.

Eaglescliffe is known for its friendly community and excellent local amenities, including shops, parks, and schools, making it a desirable location for those looking to settle in a vibrant neighbourhood. The area is also well-connected, with transport links that make commuting to nearby towns and cities a breeze.

This flat presents a wonderful opportunity for anyone looking to enjoy the comforts of home in a lovely setting. Don't miss the chance to make this charming space your own.

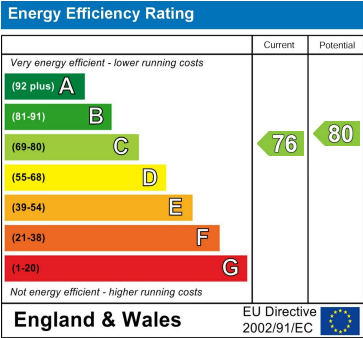


DARLINGTON | 29A DUKE STREET, DARLINGTON, COUNTY DURHAM, DL3 7RX

Council Tax Band

B

Energy Performance Graph



Call us on
01325 460 330
kevin.studholme@thelettinggroup.com

Agents Note: Whilst every care has been taken to prepare these particulars, they are for guidance purposes only. All measurements are approximate and are for general guidance purposes only and whilst every care has been taken to ensure their accuracy, they should not be relied upon and potential buyers are advised to recheck the measurements.